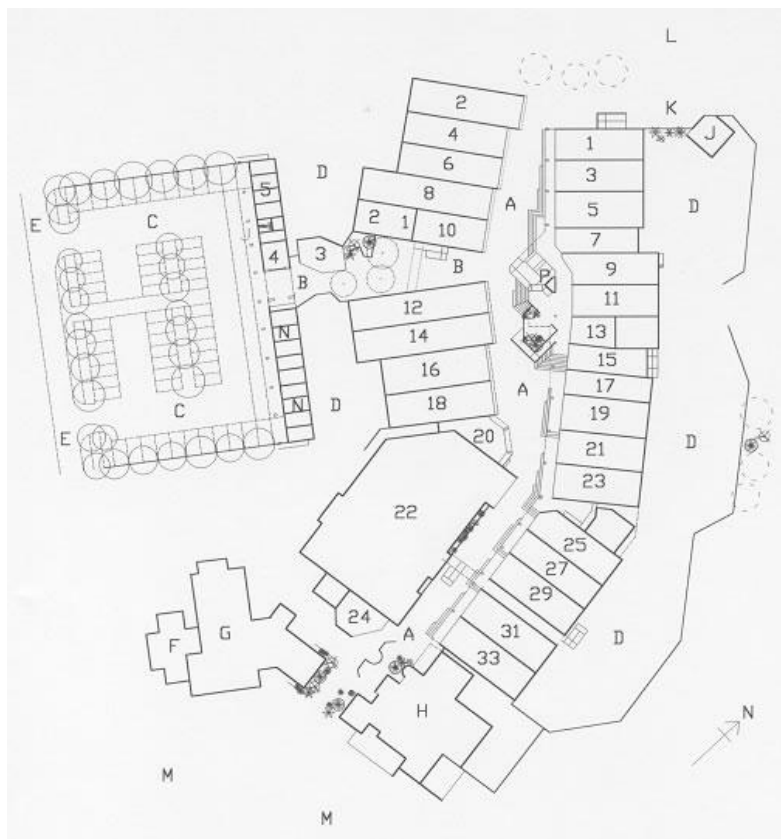


Maps & Tenants

Ground Floor Maps

- | | |
|---------------------------------|--------------------------------|
| A - The Row | H - The Badger Pub |
| B - The Link | J - Toilets |
| C - Central Car Park | K - Bus Stop |
| D - Service Area | L - North Square |
| E - Centre Road | M - The Minnis (Village Green) |
| F - Village Association Offices | N - Garages |
| G - Village Hall | |



The Row

- | | |
|----|------------------------------|
| 1 | Lloyds Bank |
| 2 | Village Pharmacy |
| 5 | Fusion Hairdressers |
| 7 | Ash Green Book Shop |
| 9 | Lyn's Café and Breakfast Bar |
| 10 | Pet shop and Hardware |
| 11 | Granary Bakers |
| 13 | Granary Bakers Shop |
| 15 | Partners Delicatessen |
| 16 | Oxfam |

18	Sun Rise Chinese Take Away
19 and 21	Martins Newsagent, Toys and Post Office
20	Wards Estate Agents
22	Co-Op Supermarket
23	Nicholas Perle Solicitors and Hartley Estates
24	Alam Tandoori Take Away Balti House
25	Pandora's box
29	Spice Village Indian Restaurant
33	Pizzalands Pizza take away
P	Little Barbers

The Link

4	Ash Green Kebab + Pizza Takeaway
---	----------------------------------

The Studios

5	The Shrubbery Veterinary Surgery
---	----------------------------------